



Mate Gauge for Steel Plants

Thickness monitoring for steel
applications



Table of Contents

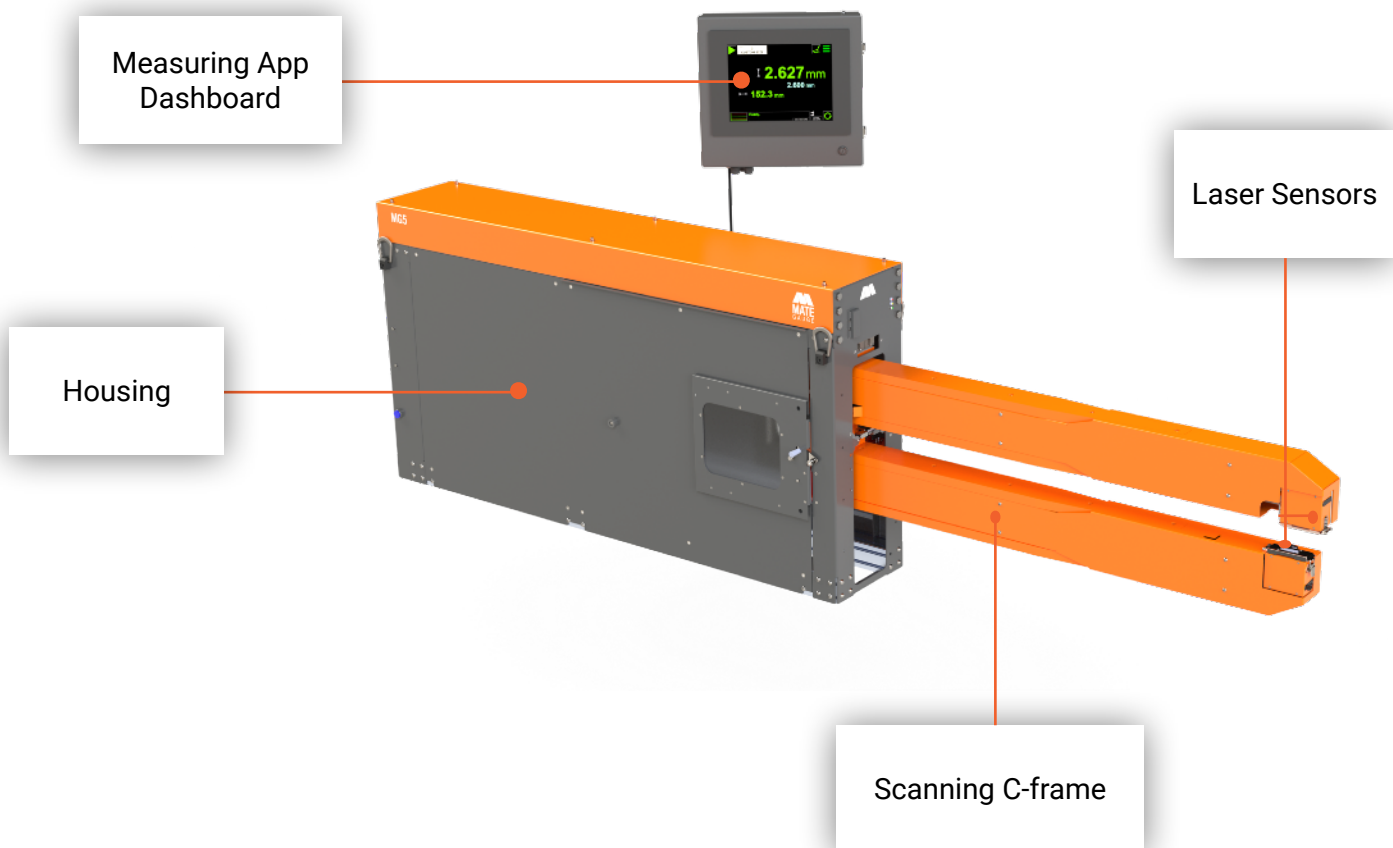
- 01** Gauge Overview
- 02** Installation Options
- 03** Accessories
- 04** Software
- 05** Commissioning

PACKAGE OPTIONS

- 1. MG1
- 2. MG5 48"
- 3. MG5 86"
- 4. MGX80

01 Overview

Mate Gauge's steel solutions all incorporate our standard **Thickness Gauge**. Developed in collaboration with industry-leading manufacturers, this unique product is designed to withstand demanding conditions while delivering the precise measurement data essential for steel manufacturing.

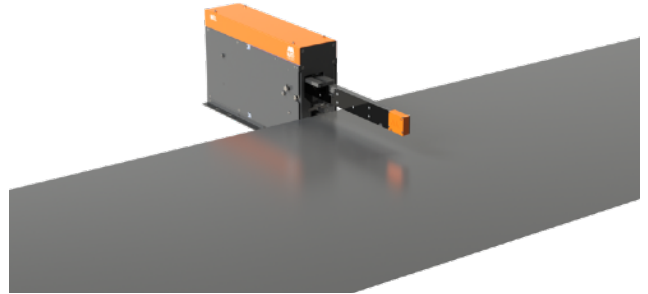
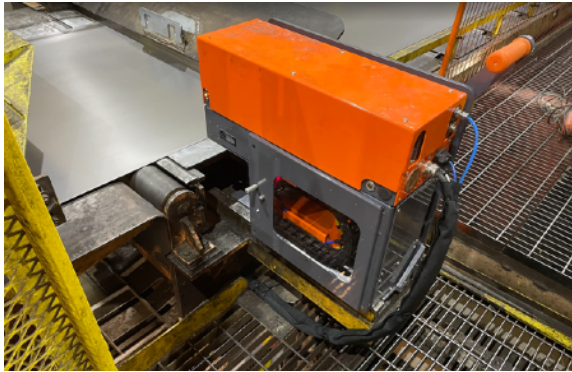


P/N: 10042500

02 Installation Options

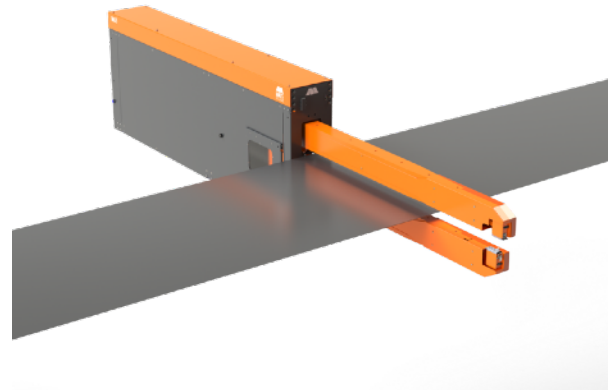
OPTION 1 Edge Gauging

For applications in which the edge needs to be measured, Mate Gauge provides compact gauging solutions, maximizing aisle space.



OPTION 2 Full Strip Gauging

Accommodating a variety of strip widths, Mate Gauge's long stroke systems give you full control over the thickness consistency and quality of your material and coatings.



OPTION 3 Benchtop Gauging

A perfect fit for QC departments, labs or line side on factory floors where a quick and accurate thickness measurement of sample materials is required.



03 Accessories

Stand Options

A stand ensures a stable and secure mounting point for the Mate Gauge system. We offer specialized stands for both the each gauge type, allowing seamless integration based on the gauge's placement and specific production requirements.

MG1 Flat Stand

P/N: 10042235

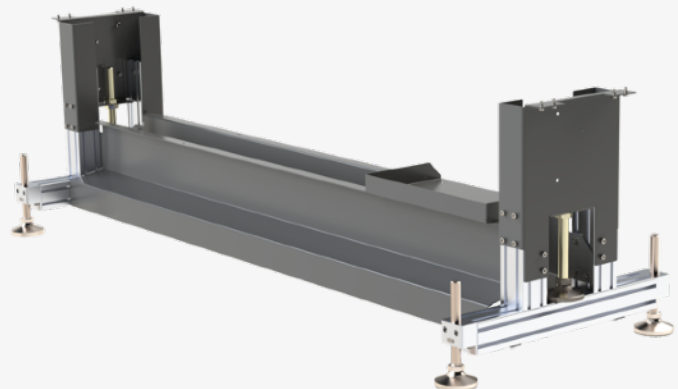


MG5 Flat Stands

P/Ns

48": 10043078

86": 10042462



Roller Assemblies

Roller assemblies allow for seamless integration into your production line. Rollers also ensure the material will always be within range of the Mate Gauge sensors.



MG1 Roller Assembly

P/N: 10041619



04 Software

Vmics (Virtual Micrometers)

All the capabilities of a standard micrometer - but on your production line - letting you measure continuously, faster and in multiple ways. Simply set your desired locations (centred or custom) specify the number of Vmics needed, anvil sizes for each, and press start.



Gauge and Go App

The Gauge and Go app measures at discrete locations across the material. The c-frame travels to a preset location and measures there for a determined amount of time. Measuring this way is ideal for continuous strips, allowing for a clear display of thickness readings at these locations.

05 Commissioning

Mate Gauge provides comprehensive support services to ensure optimal performance of your Mate Gauge system. From initial setup to ongoing maintenance, our team is committed to your success.

- **Remote Commissioning:** Provides online setup guidance and remote diagnostics to ensure proper system functionality.
- **On-site Commissioning:** An Application Engineer is physically present to oversee installation, testing, and system handover.

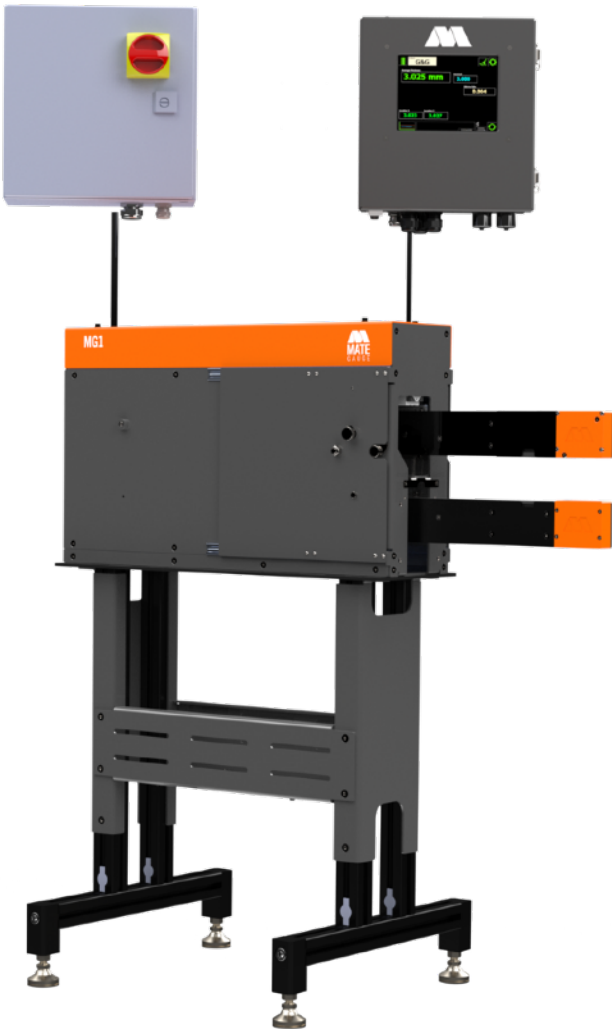
North America
P/N: 1004534

Outside North America
P/N: 1004530

Remote Commissioning
P/N: 10044022



PACKAGE 1 MG1 - 16.6" stroke



MG1



MG1 Stand



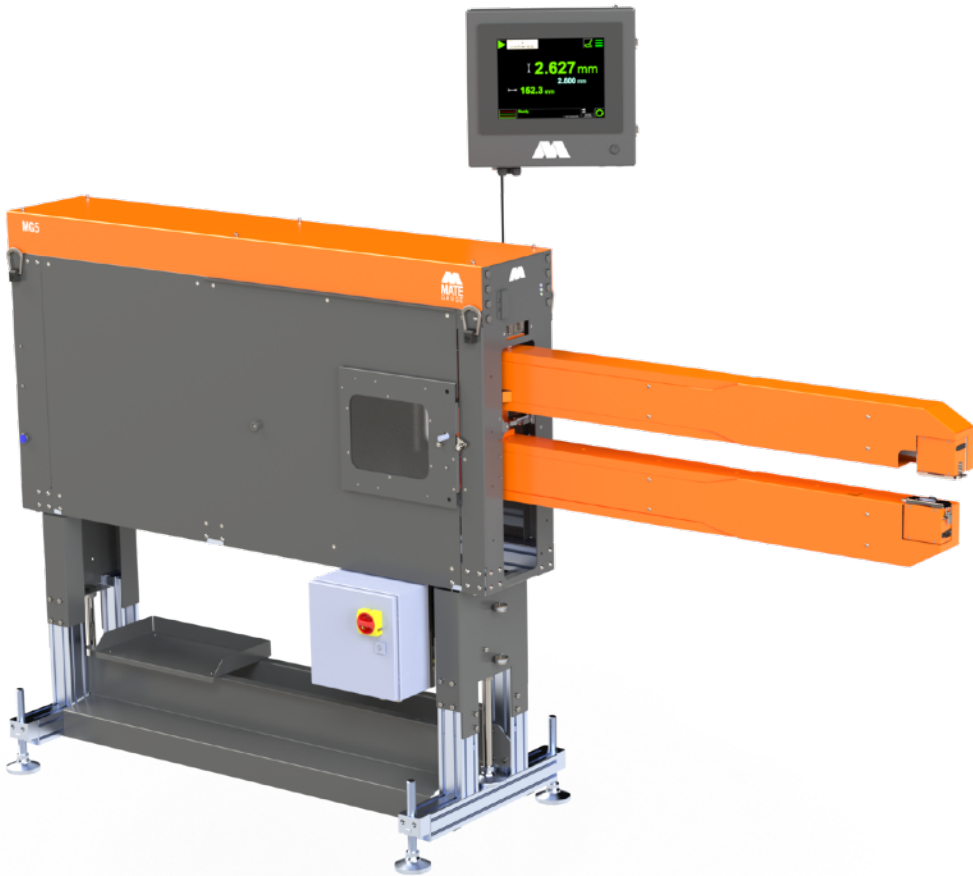
MG1 Roller Assembly

| Part Name | Part Number | Notes |
|-----------------------|-------------|----------|
| MG1 | 10041540 | |
| MG1 Stand | 10042235 | Optional |
| MG1 Roller Assembly | 10041619 | Optional |
| Commissioning: | | |
| North America | 1004534 | |
| Outside North America | 1004530 | |
| Remote | 10044022 | |

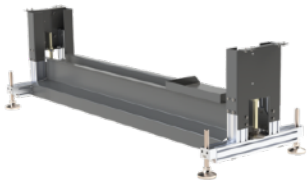


Commissioning

PACKAGE 2 MG5 48"



MG5 48"



MG5 48" Stand



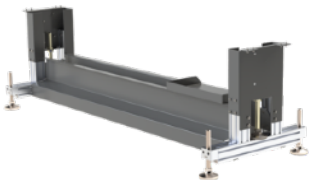
Commissioning

| Part Name | Part Number | Notes |
|-----------------------|-------------|----------|
| MG5 48" | 10042500 | |
| MG5 48" Stand | 10043078 | Optional |
| Commissioning: | | |
| North America | 1004534 | |
| Outside North America | 1004530 | |
| Remote | 10044022 | |

PACKAGE 3 MG5 86”



MG5 86”



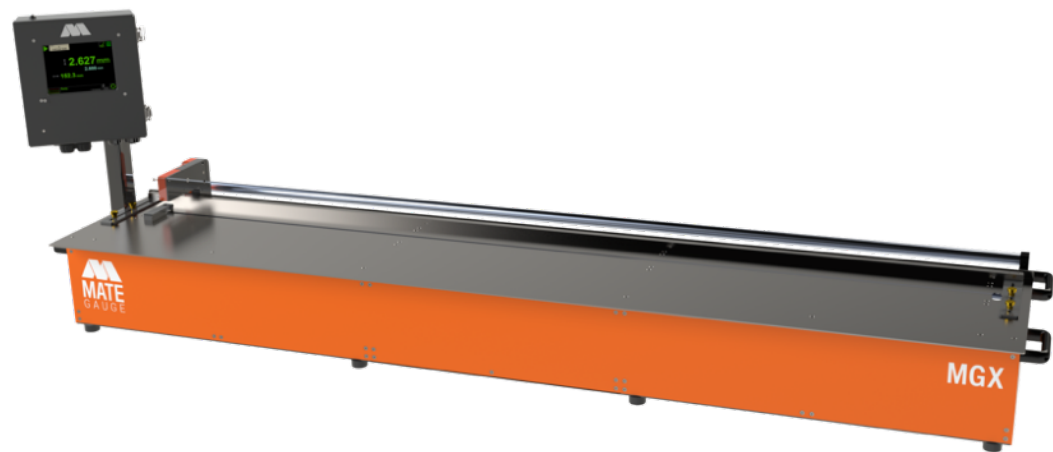
MG5 86” Stand



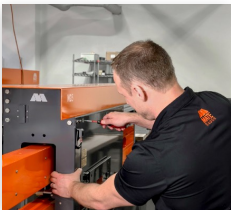
Commissioning

| Part Name | Part Number | Notes |
|-----------------------|-------------|----------|
| MG5 86” | 10044007 | |
| MG5 86” Stand | 10042462 | Optional |
| Commissioning: | | |
| North America | 1004534 | |
| Outside North America | 1004530 | |
| Remote | 10044022 | |

PACKAGE 4 MGX80



MGX80



Remote Training

| Part Name | Part Number | Notes |
|-----------------|-------------|----------|
| MGX80 | 10041660 | |
| Remote Training | | Included |



mategauge.com