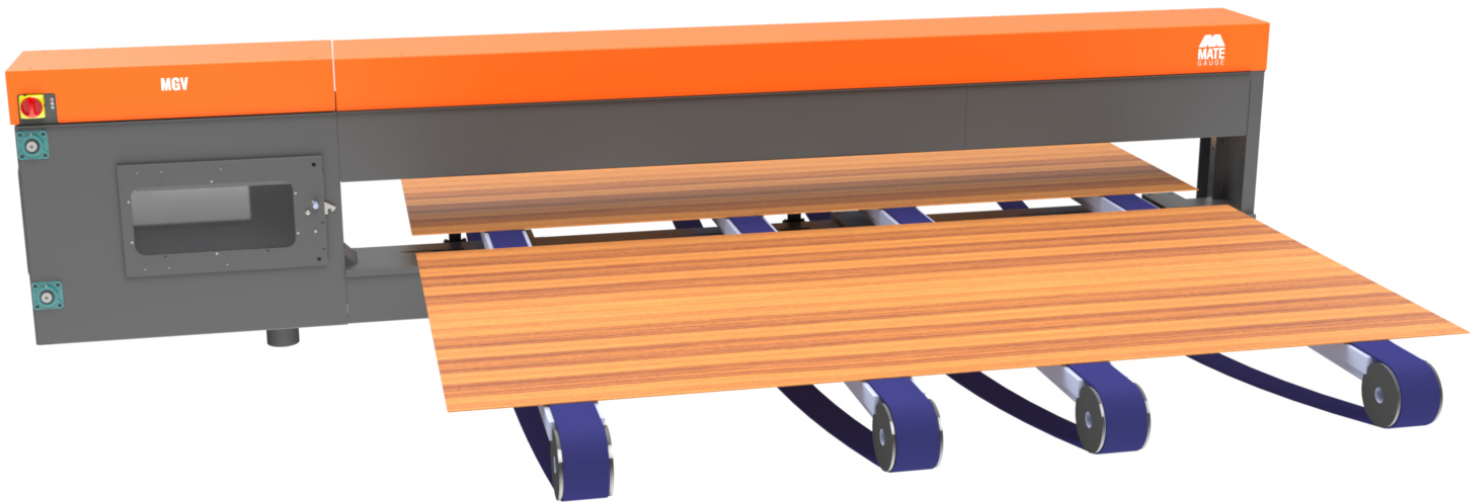


# MGV

## Complete Thickness Monitoring for Veneer Peeling Lines



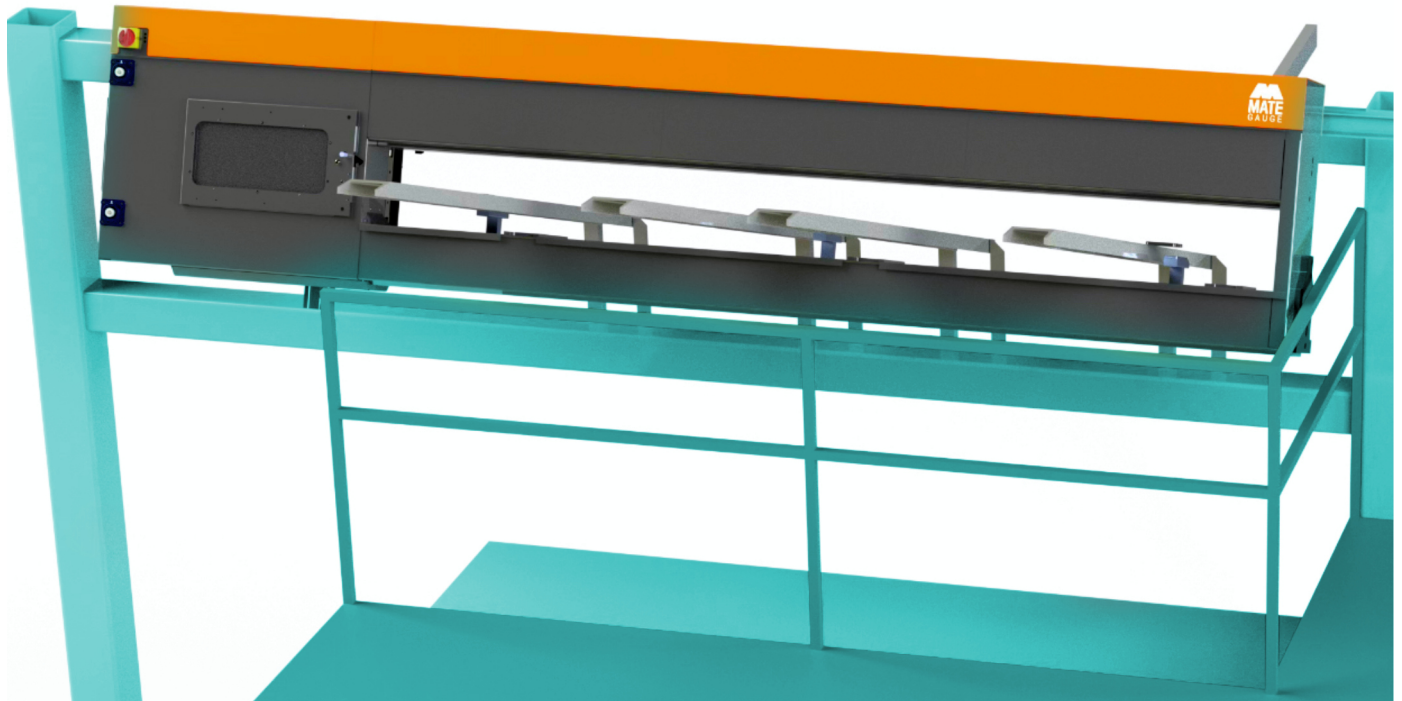
**Gain complete insight and automate your quality control with the all new MGV, our first triple-laser gauge designed from the ground-up for Veneer production.**

In veneer peeling, yield is determined by the consistency of the ribbon. Lathe chatter and thickness variation don't just affect the peel—they cause issues downstream in drying and lay-up.

The new MGV continuously measures thickness at three fixed locations – edge, center, and edge – providing a live view of veneer quality through every peel and every ribbon. The MGV brings laboratory-grade precision directly to the green end, allowing operators to spot chatter marks and blade wear instantly, long before the veneer reaches the dryer.



# MGV - NEW FORM FACTOR



With MGV, operators finally gain continuous, reliable visibility into veneer thickness and chatter. The system transforms peeling from a reactive process into a controlled, data-driven one. It ensures proper blade setup, detects issues instantly, and provides quality assurance throughout the run — all without disrupting production.

MGV boasts a triple-laser cluster across a 102" span, enabling - for the first time - real-time continuous monitoring at three independent locations on the sheet.

- ✓ Continuous, edge-center-edge thickness measurement directly after the lathe
- ✓ Detects chatter and setup issues before they affect product quality
- ✓ Seamless PLC integration and full data publishing
- ✓ Easy calibration every 3 months using a NIST-Traceable master block
- ✓ Active air-curtains keep optics clean, even in high-pitch environments.
- ✓ Historical tracking for process optimization and recovery

# STAY INFORMED WITH THE VENEER APP (mgOS)



Built into every Mate Gauge system is mgOS, our thickness monitoring software. Engineered specifically for inline use, it transforms raw measurements into actionable insights, providing your operators and managers with the clarity and control they need to keep your lines running smoothly.



Real-time measurement and profile insights at a glance

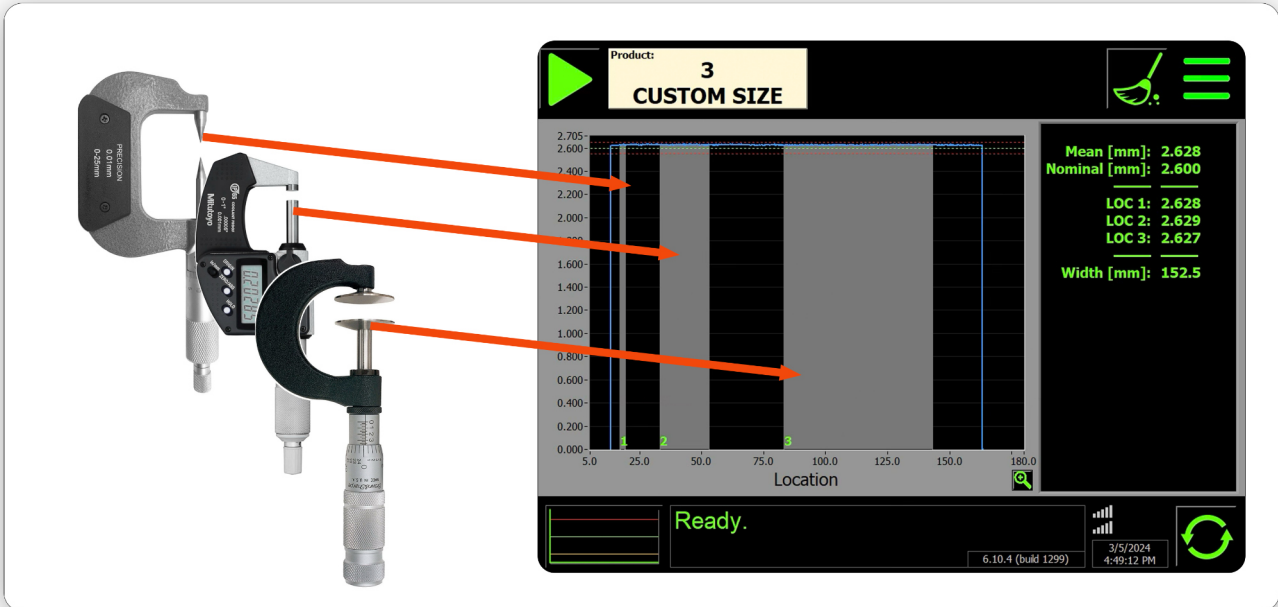


Configurable measurement zones and Vmic parameters



Seamless PLC integration for closed-loop control

# VIRTUAL MICROMETERS AT YOUR FINGERTIPS



Get fast, repeatable, inline measurements without slowing your line. Manual micrometers have their place, but they can't keep up with production speed and may deliver different results depending on the user. Mate Gauge gives you the familiar readings of your micrometer but in digital form.



**Increase Speed:** capture measurements continuously, in real time, rather than spot-checking manually.



**Eliminate Variability:** ensure consistent results regardless of operator or shift.

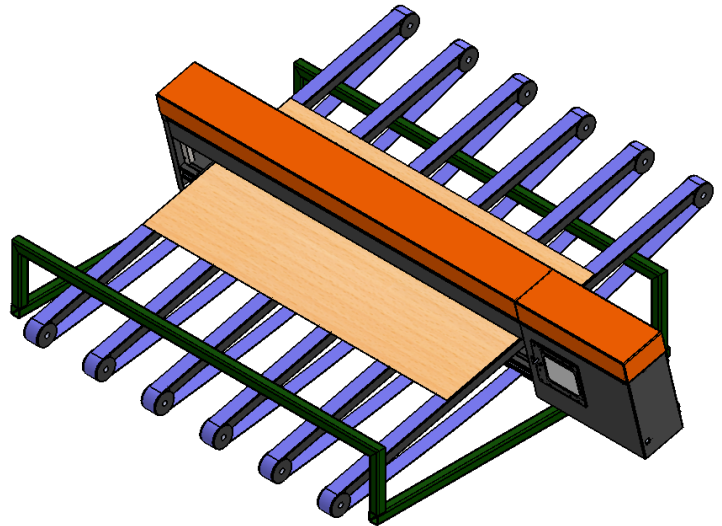
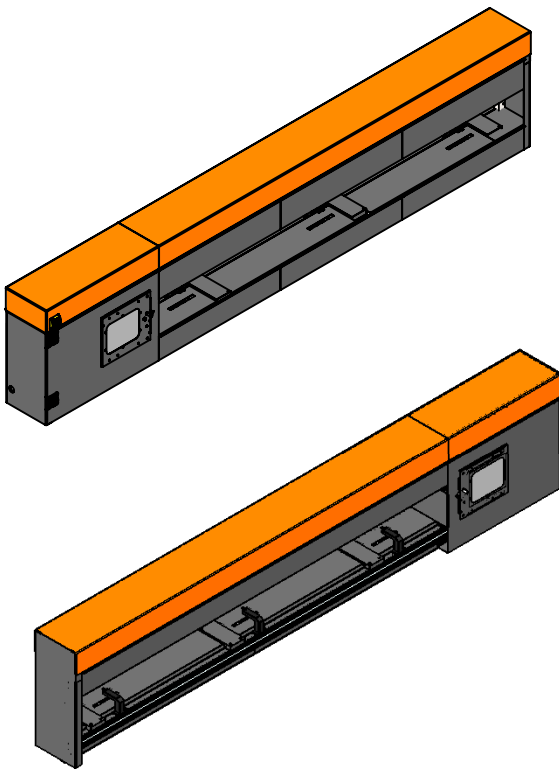
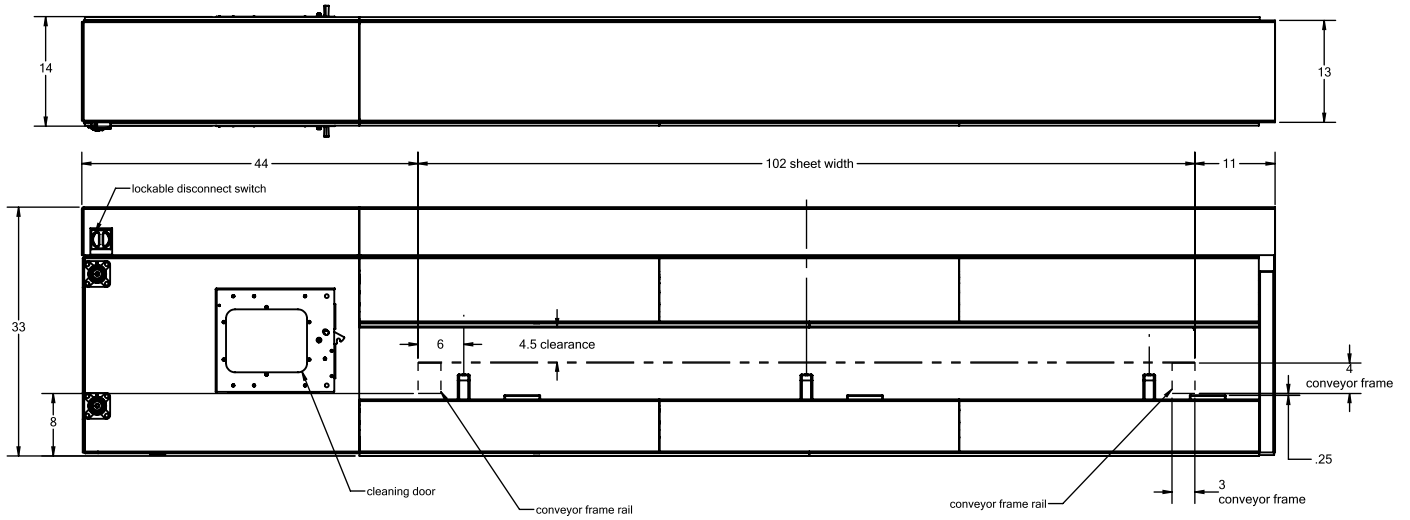


**Customize Measurements:** adjust anvil size and mic placement (centered, repeated, custom, or zone-based) to fit your measurement needs.



**Automated Record-Keeping:** all measurements are logged automatically to a CSV file, so results are saved and accessible without manual data entry.

# MGV - TECHNICAL DATA



# MGV - SPECIFICATIONS

ENVIRONMENTAL REQUIREMENTS	Value (Metric)	Value (Imperial)
Resolution	0.5 $\mu\text{m}$	[0.00002 in]
Accuracy (typical)	10 $\mu\text{m}$	[0.0004 in]
Thickness Range	0 to 51 mm	[0 to 2 in]
Measurement Frequency	1 to 20 kHz	
Max Product Width	2590 mm	[102 in]
Product Weight	362.87 kg	800 lbs

SUPPLY REQUIREMENTS	Value (Metric)
Line Unit Power	6.6A @ 115V / 3.3A @ 230V
HMI Power	1.5A @ 115V / 0.75A @ 230V
Air Supply	20 CFM @ 90 - 150 PSI / 34 m <sup>3</sup> /hr @ 6.2 - 10.3 Bar
Blower	8A @ 120 VAC / 4A @ 230 VAC

ENVIRONMENTAL REQUIREMENTS	Value (Metric)	Value (Imperial)
Operating Temperature	5°C to 50°C	[41°F to 120°F]
Humidity	80% at 31°C (88°F) - 50% at 40°C (104°F)	



**HOW TO REACH US:**

+1 613-287-0171

[info@mategauge.com](mailto:info@mategauge.com)

Kanata, ON, Canada