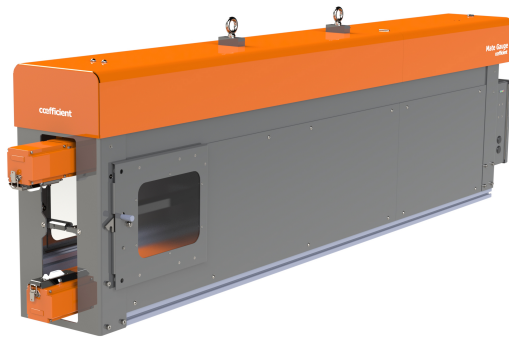


# coefficient

## MATE GAUGE STEEL

### A LARGE SCALE, AUTOMATIC LASER THICKNESS GAUGE FOR WIDE CONTINUOUS STRIP STEEL LINES.



The Mate Gauge Steel is a large scale thickness scanner designed to measure wide continuous strip steel materials prior to downstream operations. Based on the successful Mate Gauge 3, it targets multiple regions of interest across the strip, such as right edge/center/left edge thickness. The Mate Gauge Steel can be used for real time monitoring of the incoming material specifications and generating quality reports for customers. Like all of our gauges, PLC integration is available for more advanced process control.

### KEY FEATURES

- “Gauge Trace”- generates a detailed report about the thickness through the coil.
- Automation- measure the thickness profile of **an entire coil in as fast as 3 minutes.**
- Easy integration with **PLCs and Databases**
- Configurable **warnings and tolerance**
- **Approximately 3,000 points** along



# coefficient

## MATE GAUGE STEEL

### FEATURES

- ✓ NON-CONTACT MEASUREMENT
- ✓ FULL STRIP PROFILE DISPLAYED
- ✓ ACTIVE THERMAL CONTROL
- ✓ TOUCHSCREEN DISPLAY
- ✓ EASILY INSTALLED AND MAINTAINED
- ✓ REMOTE SUPPORT
- ✓ DATA LOGGING
- ✓ REMOTE INSTALLS AVAILABLE
- ✓ CLOUD, PLC, AND DATABASE INTEGRATION

### TECHNICAL SPECIFICATIONS

#### THICKNESS MEASUREMENTS

Thickness Range	0.01-40 mm	0.0004 - 1.6 in
Resolution	0.0025 mm	0.0001 in
Stroke	1816.1 mm	71.5 in
Measurement Frequency	1 to 5 KHz	-

#### LINE SPECIFICATIONS

Line Speed Range	0-1000 ft. per minute
------------------	-----------------------

#### WEIGHT

Sensor assembly, no stand	135 kg	300 lbs
Stand	90 kg	200 lbs

#### SUPPLY REQUIREMENTS

Power supply input	100-240 VAC, 50-60 Hz, 2.2-4.4 A
Air	12 CFM @ 90-110 PSI

#### PHYSICAL DIMENSIONS

Sensor Assembly, no stand	2402 x 325 x 708 mm	94.6 x 12.8 x 27.9 in
Operator HMI	400 x 400 x 118 mm	16 x 16 x 4.6 in

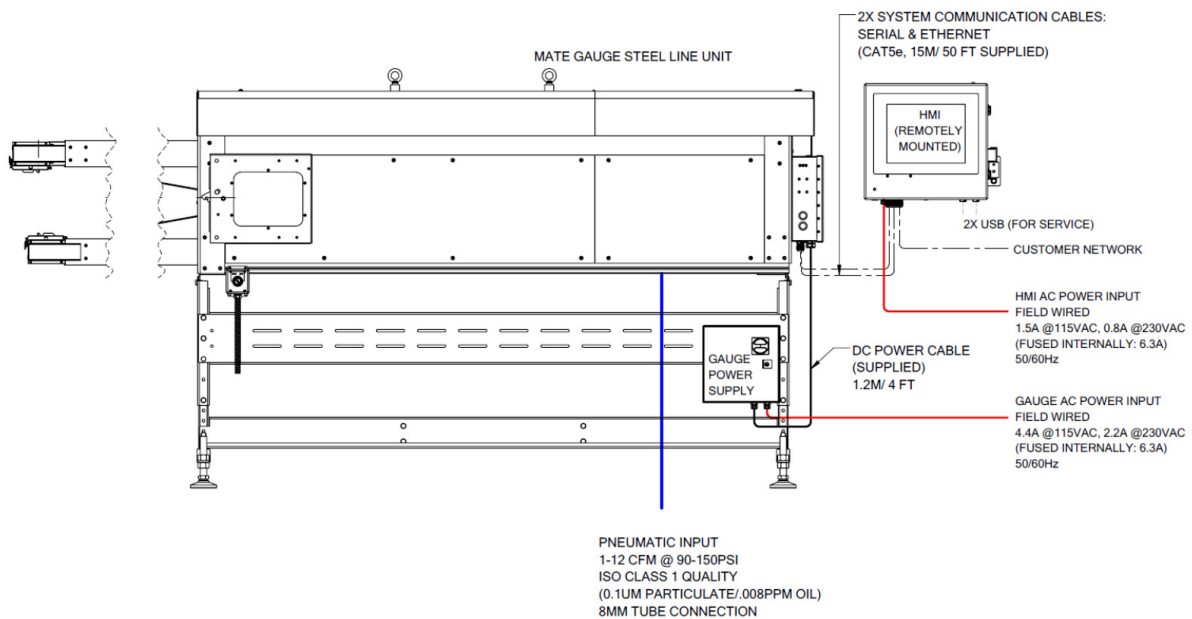
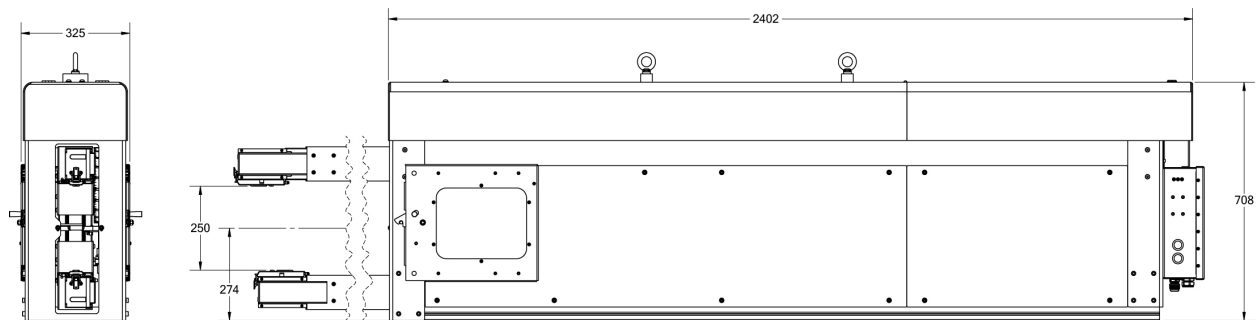
#### ENVIRONMENTAL

Operating temperature	10-60 C	50 to 140 F
Humidity	<90%	-

# coefficient

## MATE GAUGE STEEL

### DIMENSIONS



# coefficient

## MATE GAUGE STEEL

### Controls and Display Features that Simplify Quality Control

On-screen data visualizations ensure that the right data reaches line operators. The gauge display automatically connects to your existing systems to set thickness targets and key thresholds. Alarms appear on-screen with varying levels of severity (yellow tag, red tag, and flashing).

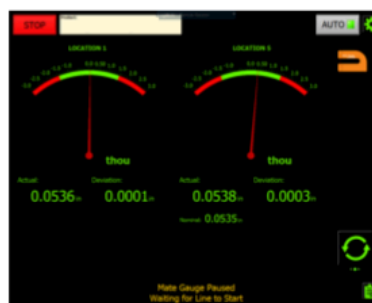
The visualizations show real-time thicknesses and run charts of multiple locations across the strip. Additional screens display cross-sectional and continuous profile thicknesses.



Large Numerical Display,  
Including Thickness Difference



Display showing thickness at  
locations, and dual-location run



Needle Gauge Location  
Showing Left-Right thickness.



## MATE GAUGE STEEL

### Mate Gauge Steel- Software Features

<b>Operation Mode</b>	Scan Capture Scan Capture - Sample Gauge and Go Gauge and Go - Micro Scan
<b>Measurement Filters</b>	Outliers Working Range Deviation from recent average Deviation from target
<b>Alarming System</b>	Thickness Width Signal Quality Product Centering System Health
<b>Full Line Integration</b>	Read line status from PLC Pass measurements to PLC Include PLC status in summary file Automatic Start/Stop of Mate Gauge based on line status Automatic product change
<b>Product Selector</b>	Easily switch between multiple products manufactured on the same line Favourite products
<b>User Interface</b>	Separate UIs for Operators and Engineers Password Protected
<b>Graphs and Visualizations</b>	Thickness Shape Tilt Run Chart Needle Gauges (deviation from target)
<b>Reporting</b>	Measurement Summary file (MS Excel compatible) File Viewer (optional) Daily email report (optional)