

Mate Gauge

MATE GAUGE 3

THE NEW STREAMLINED AUTOMATIC THICKNESS GAUGE FOR LEAD-ACID BATTERY

USE ON ANY PASTING LINE

- Can be installed **before** or **after** flash drying
- **In-line** or **near-process** set up options
- Measures **continuous strip**, **panel**, or **individual plates**



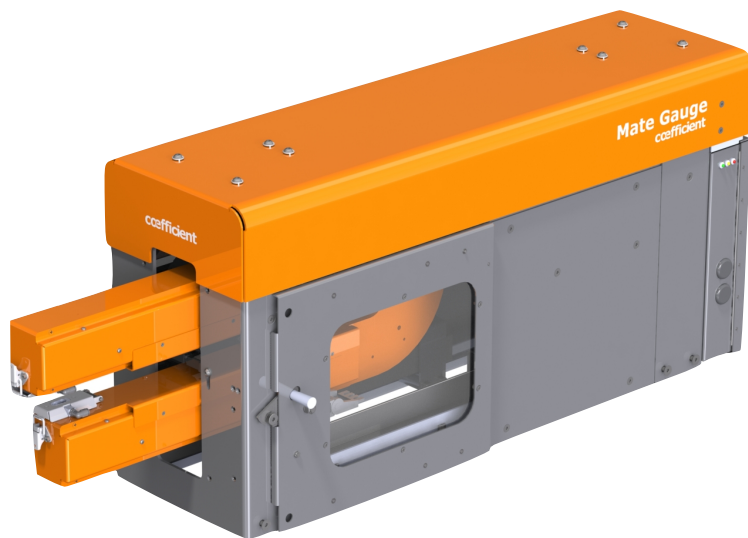
Individual Plates



Continuous Panel



Continuous Strip



REDUCES SCRAP BY 3-5%

- **Control the thickness of every plate** with unmatched precision
- **Eliminate operator error** using automatic control
- **Drive continuous improvements** using process data

CUTS YOUR THICKNESS VARIATION IN HALF

- **Slash thickness variations** across plate profiles using traversal scanning technology
- **Prevent uneven plates** and leaning stacks
- **Achieve superior quality**, every time

ACHIEVE TRULY AUTOMATIC CONTROL

- **Self-calibrating** operation for consistently accurate readings
- **Built-in cooling** and temperature stabilization to ensure low maintenance requirements
- **It even cleans itself** and performs diagnostic checks for errors or abnormalities

Mate Gauge

MATE GAUGE 3

FEATURES

- ✓ NON-CONTACT MEASUREMENT
- ✓ FULL STRIP PROFILE DISPLAYED
- ✓ ACTIVE THERMAL CONTROL
- ✓ TOUCHSCREEN DISPLAY
- ✓ EASILY INSTALLED AND MAINTAINED
- ✓ NETWORKABLE
- ✓ REMOTE SUPPORT
- ✓ DATA LOGGING

TECHNICAL SPECIFICATIONS

PASTING LINE SPECIFICATIONS

Line Speed	100+ m / min	[300+ ft / min]
Plate Thickness (typical)	0mm to 10 mm	[0 to 0.40 in]
Plate Type	Continuous Strip; Single or Dbl Panels	
Pasting Machine	Cloth Belt, Steel Belt, Drum, FOP	
Surface	With or without pasting paper, flat or textured.	
Line Location	Before or After Flash Dry	
Spray-Down	Near Spray Down is acceptable. Not intended for frequent high-pressure washing.	

THICKNESS MEASUREMENTS

Resolution	0.1 μ m	[0.00004 in]
Accuracy (typical)	4 μ m	[0.00016 in]
Stroke	38 cm	[15 in]
Scanning Speed	15 cm/sec	[6 in/sec]
Thickness Range	0 to 20 mm	[0 to 0.8 in]
Measurement Freq.	1 to 3 kHz	

WEIGHT

Sensor Assembly	50 kg	[110 lbs]
Operator Panel	10kg	[22 lbs]

SUPPLY REQUIREMENTS

Supply Requirements	6A @ 110V/60 Hz	3A @ 240 V/50 Hz
Air	12 CFM @ 90 PSI	

PHYSICAL DIMENSIONS

Sensor Assembly	978 x 329 x 473 mm	[38.5 x 13 x 18.6 in]
Operator HMI Panel	285 x 190 x 60 mm	[11.2 x 7.5 x 2.5 in]

ENVIRONMENTAL

Operating Temperature	10 °C to 60 °C	[50 °F to 140 °F]
Humidity	< 90%	